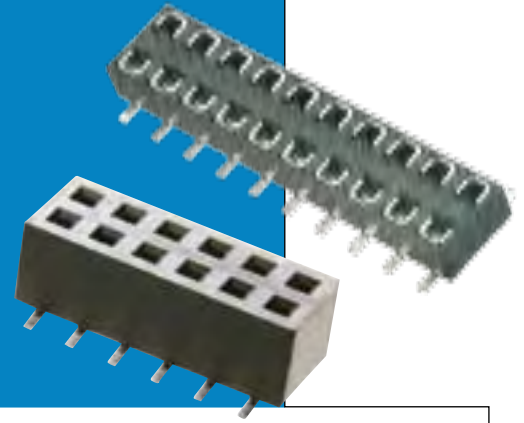


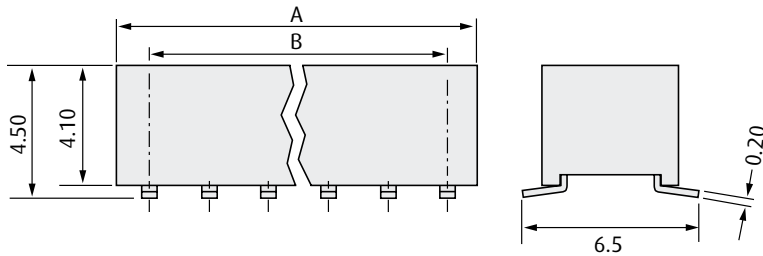
# M22 Connectors

## Vertical SMT Female Connectors

- ❖ Dual entry socket can be used in either top or bottom entry applications and has locating pegs to ensure correct positioning onto the board.
- ❖ Suitable for use with male connectors shown on pages 92-94 and 96-99.
- ❖ Twin beam contact for cost-effective reliability.

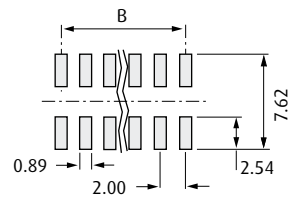


### SMT FEMALE – 4.50mm HEIGHT



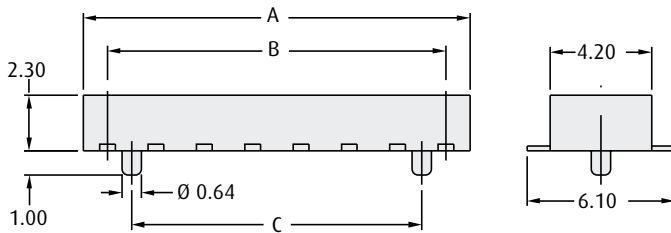
### CALCULATION

<b>A</b>	$B + 2.50$
<b>B</b>	$2.00 \times (\text{No. of ways per row} - 1)$



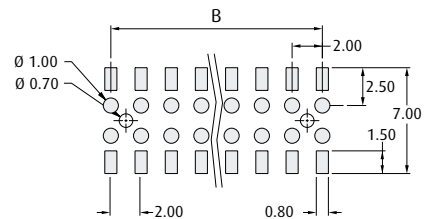
Recommended PC Board Patterns

### DUAL ENTRY SMT FEMALE – 2.30mm HEIGHT



### CALCULATION

<b>A</b>	$2.00 \times \text{No. of ways per row}$
<b>B</b>	$2.00 \times (\text{No. of ways per row} - 1)$
<b>C</b>	$B - 2.00$



Recommended PC Board Patterns

### HOW TO ORDER

**M22 - 63 X XX XX**

#### SERIES CODE

#### CONNECTOR TYPE

<b>4</b>	DIL Female, 4.5mm high
<b>6</b>	DIL Female, 2.3mm high

#### FINISH

<b>42</b>	Gold + Tin	
<b>46</b>	Tin (M22-636 only)	

#### NO. OF WAYS PER ROW

**03 to 32**

All dimensions in mm.

[www.harwin.com](http://www.harwin.com)

2mm (.080") PITCH

